

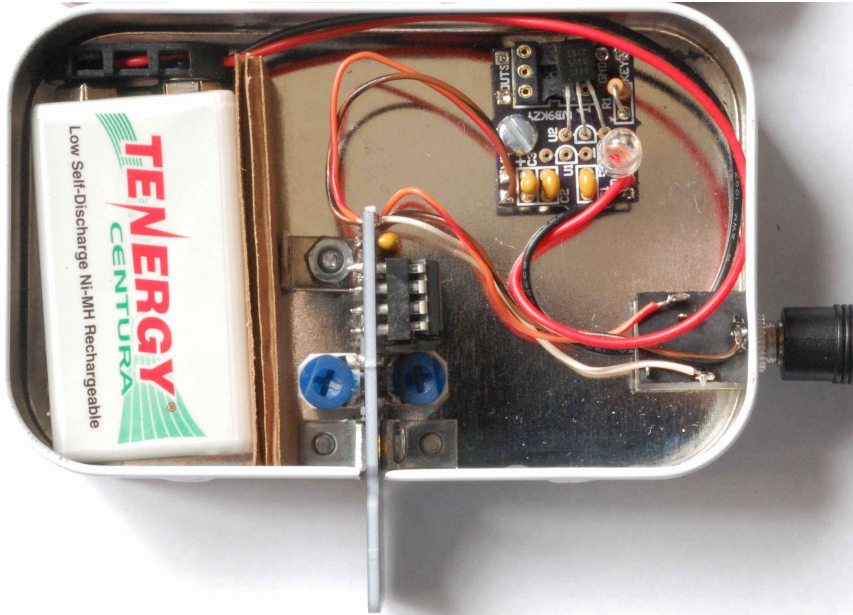
PICPADL kit mounted in an Altoids tin:

Jackson Harbor Press

<http://wb9kzy.com>

wb9kzy@wb9kzy.com

Copyright © 2019 by Charles J. Olson



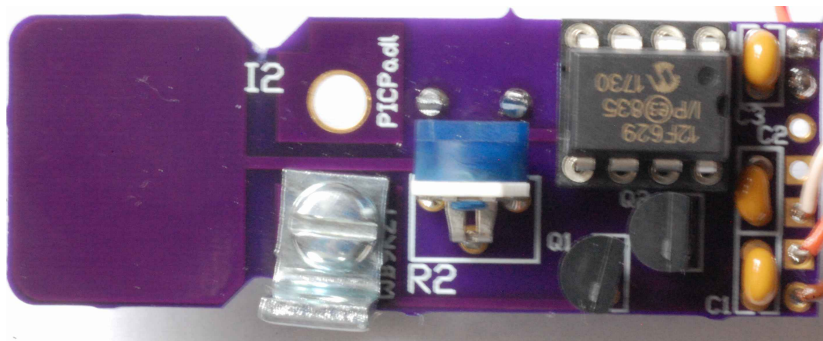
White rectangle is cut metal strip folded down



Shown with optional Keyer Accessory kit

Note: put the L-brackets on either side of the board. Put the bracket with the unthreaded hole (vertical) under the head of the longer 4-40 screw. With the board and brackets flush on a flat surface, tighten the screw. The assembly can then be used to mark where the two holes should be drilled in the tin.

Top side shown with L bracket



Bottom side shown with L bracket

